

## Olsen Court, Lincoln - Extra Care Housing

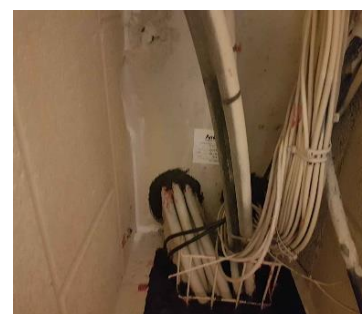


### Overview

Officially opened in 2006 by HRH the Countess of Wessex, Olsen Court is located within the historic City of Lincoln. A development of specially designed self-contained apartments were built to help retain independent living.

### Scope of Works

Fire Industry Specialists were engaged to carry out removal of existing non-compliant fire stopping and re-install new fire stopping to ensure legislative compliance. The building remained in full occupation throughout. The full suite of Rockwool products were utilised to provide a proven system solution.



### Key Points

Safe working practice, zero harm tolerance.

Consideration maintained at all times for residents.

Working practices adopted to achieve zero impact on residents.

Close co-ordination and collaboration with the project team to deliver the project safely.

Fire Industry Specialists Ltd t/a AmberFire | Unit 14/15 Cedar Parc | Lincoln Road | Doddington | Lincoln | LN6 4RR | 0333 444 0070